



**2011 SOUTH DEVON
WALKING AND ACTIVITIES FESTIVAL
FRIDAY 23RD – MONDAY 26TH SEPTEMBER**

We are now open for bookings for this event ...so it's time to check out what the Festival has to offer...then come and join in all the fun!

To help you make the most of the Festival, we have used symbols to distinguish events and activities; as these are being hosted across the various Information Centres, we have also colour coded the Itinerary so you know who to contact, with full details listed under Festival Booking Info

You can enjoy many of the events and activities within the Festival **COMPLETELY FREE but we must ask you to please book in advance due to minimum/maximum numbers to avoid disappointment.**

Where charges have had to be made, thanks to the generous support of our various Festival partners, we have been able to keep those to a minimum and often relate to additional or optional elements (eg refreshments, entrance fees, instruction, equipment hire, transport, etc.)

DARTMOUTH & KINGSBRIDGE MODBURY SALCOMBE TOTNES

Family Fun
/ Children



Commemoration
Events



Local Food
& Drink



History &
Heritage



Natural
Beauty



Special
Interest



Water
Activities

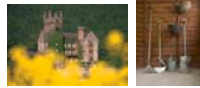


FESTIVAL SPECIAL – ACROSS THE AREA!

Wherever you are during the Festival, you will never be far away from one of the Venus Cafés so why not take advantage of the Venus Lovers' Passport whilst you are enjoying the activities? With 4 of them located in our area : 3 on the South West Coast Path - Blackpool Sands; Bigbury-on-Sea; East Portlemouth, and the fourth nestling in the stunning setting at Dartington, whichever you choose you can be assured of a warm welcome and wonderful local food and drink.

Pick up your Passport at any of the Venus Cafés or from the Information Centresand start collecting stamps! Don't forget to ask every time you spend £5 – with just 3, claim your free hot drink; collect 5 and claim a free hot meal up to the value of £7.50!

Fringe Event: Thursday 22nd September



TOTNES HERITAGE WALK

Kathy Alexander will be offering her comprehensive and fascinating Totnes Heritage Walk commencing at 10.30 am from outside Totnes Information Centre, TQ9 5DF.

Cost: £5 per person, child £3, payable to Walk Leader on the day

Date: Friday 23rd September 2011

START POINT PENINSULAR INCLUDING PRIVATE LIGHTHOUSE TOUR



See one of Devon's most southerly peninsular – spectacular Start Point – in the company of the landowner and experienced walk leader Sir Geoffrey Newman. Enjoy panoramic sea views; spotting birds, seals and other wildlife; and learn about offshore wrecks around this headland on this circular walk including a private tour of the Lighthouse which has illuminated this hazard for sailors since 1836 and was still manned until as recently as 1993!

Distance / terrain: Approx 2.5 mile; rugged coast path, surfaced path & steps

Grade: Moderate but strenuous in parts

Timing: Start 10.00am; approx 2-3 hours including Lighthouse tour

Meet at: Start Point Car Park

Grid Ref: SX822377

Bring: Binoculars if you have them – ideal spotting opportunities! A drink and a snack if you wish

Please note: this is an exposed location so please dress appropriately; stout

	shoes or walking boots
<u>Restrictions:</u>	NO DOGS
<u>Cost:</u>	WALK : FREE! Admission charges to Lighthouse: Adults £3.50; Children (5-16 yrs) £2.00; Families (2 + 3) £9.50
<u>Directions:</u>	From A379 (Dartmouth – Kingsbridge road) follow signs for Start Point at small roundabout at Stokenham; continue until you see 2 large masts and the track passes between gate posts, continue to the car park at the end of the road
<u>Public Transport:</u>	Regrettably there is no public transport
<u>Parking / Fee:</u>	Start Point Car Park : there will be no parking charge payable by walk participants for this event
<u>Maximum Nos:</u>	20



SNAPES POINT AND SALCOMBE ESTUARY WALK

Join one of the National Trust Rangers on a guided walk around Snapes Point; learn how we farm and manage the area for wildlife; and gain an insight into the Salcombe Estuary through expert eyes. This is your chance to understand the real beauty of this stunning environment – from one of those working hard to protect it for the future!

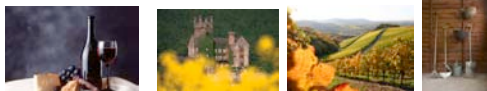
Meet at Snapes Point NT Car Park at 10.30am – Grid ref: SX739401

Walk – approximate length and time 3 miles / 1.5 to 2 hours; [please note, this is given as a guide only as, within reason, this walk can be tailored to those taking part]

Terrain – the majority of the walk will be on well used footpaths but please note these will be uneven in places and may be slippery under foot after wet weather

Charge – **FREE** (Donations to NT for Car Parking please)

SPECTACULAR SOUTH HAMS – AND A RETURN THROUGH FLETE ESTATE



(by kind permission of Anthony Mildmay-White)

Distance / terrain: 10 miles on footpaths, including permissive paths, and Flete Estate carriage drives. Possibly muddy in places.

Grade: Moderate/Strenuous includes some hills & styles.

Timing: 10.30am start, approx 5 hours duration

Leader: Mike Oakins-Joint Footpath Co-Coordinator

Description: A walk through typical South Hams countryside. The walk starts through meadows down the lovely valley of the Ayleston Brook, which is crossed at Orcheton to climb the hills onto open farm land, with spectacular views, via permissive footpaths and bridlepaths. Through the ancient village of Kingston and down through the woods to the estuary of the Erme and the beach at Wonwell. By special agreement the return route is along an old carriage drive which follows the Erme up river through the private Flete Estate, a short stretch on the county road and the final mile along the historic green lane – Runaway Lane. Much of this walk is across countryside only accessible to the public with permission.

Come early and experience our hospitality with a hearty breakfast, or bacon roll, in the town to get the day off to a good start. Purchase a fully prepared packed lunch or scrummy pates, pies & cheeses to make up your own. On your return we can offer a well earned Cream Tea to finish off the day-you will have earned it!

Meet at: Junction of Church Lane & Benedict Way -PL21 0TJ

Map ref: SX 655516

Bring: Suitably stout footwear is recommended. Please bring packed lunch with sufficient drink.

Restrictions: Dogs are acceptable **provided they are under close control and may need to be put on a lead at certain points.**

Cost: Free

Travel Directions: From Modbury town centre, travel along the A379 towards Plymouth. Church Lane is found on the left after approximately 800 yards.

Public Transport: The regular First 93 bus stops in Modbury town centre. Please see www.traveline.org.uk for timetable details. It is then an approximate 800 yard walk up the hill
(Warning-this is a busy road which has no footpath in parts)

Parking: Limited roadside parking in Church Lane, or in main Poundwell Car Park

Parking Fee: Free on the roadside, or from £0.90p per hour, in car park.

Max no places: Maximum 12 participants



A FARM WALK IN BIGBURY

Distance / terrain: Approx 2 miles. Uneven terrain.

Grade: Moderate

Timing: 10.30am – 12.30 approx 2 hours – followed by lunch and optional afternoon walk

Leader: Cathy Heath,

Description: A guided farm walk on an organic and Higher Level Stewardship Farm – meet the farmers and learn how they employ 21st century farming techniques without changing the traditional landscape to ensure the farm's longterm sustainability whilst protecting the environment; and BBQ lunch with local food from Holsome Park Quality Meats.

Mount Folly Farm is a beef and sheep farm on the coast at Bigbury Bay. The farm borders the mouth of the River Avon with some fantastic river scenery and breathtaking views of Bigbury Bay.

NB This event is hosted entirely within a working farm environment with animal contact and in proximity to farm machinery and equipment

Meet at: Mount Folly Farm, Bigbury-on-Sea, TQ7 4AR

Map ref: SX660 447

Bring: Suitable walking shoes

Restrictions: no dogs – due to proximity to farm animals

Cost: Farm Walk **Free** / Lunch is £5.50 pp payable at event and must be booked in advance

Travel Directions: Mount Folly Farm is at the entrance to Bigbury-on-Sea village. Park in the field on the right.

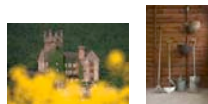
Public Transport: not available

[if sufficient numbers book in advance who indicate they would use transport if it were available, it may be possible to organize this for a small fee]

Parking: In field on farm

Parking Fee: Free

Max no places: Unlimited



TOTNES GARDEN TRAIL

Description: An exploration of three new open spaces in Totnes centre, linked by Leechwell Lane. All on formerly underused sites, created by community groups and local trusts in partnership with South Hams District Council. Visit Heath's Garden, Leechwell Garden and the Lamb Garden in turn, wander through these interesting spaces and past their public art, hear about the history behind them and their new, innovative uses. View the immersion pool and see the principle of forest gardening and community food growing in action. Led by Sue Holmes Totnes Development Trustee and lecturer.

A free copy of the Totnes Garden Trail will be given to all participants.

Each walk will take about 45 minutes.

Meet at: In front of St Mary's Parish Church, High Street, Totnes, TQ9 5NN at 11.00am

Map ref: SX803605

Terrain: Generally easy but with three road crossings, some upward slopes and a few steps on the way
Charge: **FREE (Donations to Totnes Development Trust please)**



TOTNES RIVERSIDE WALK

Description: What was the importance of the river to Totnes and how did the town make use of it through the ages?

Take this pleasant stroll from the peaceful Totnes Weir down to busy Steamer Quay and find out more with Walk Leader Kathy Alexander. There will be an opportunity for refreshment at the Riverside Café at the end of the walk.

Walk will take about 1.5 hours

Meet at: Outside Totnes Mainline Rail Station TQ9 5JR
From 1.50 pm onwards for 2.00pm start

Map ref: SX801609

Terrain: Mostly flat and easy but may be muddy underfoot in places. One main set of steps

Charge: £5 per person Minimum 10 walkers
To ensure there are the minimum number of participants for this event to proceed we do ask that you please book your place/s in advance. Payment to be made to the walk leader on the day

Date: Saturday 24th September 2011



DISCOVER MODBURY

Distance / terrain: 6.5 miles, mostly on Public Footpaths & green lanes.

Grade: Moderate/Strenuous includes some hills & stiles.

Timing: 10.00am start, approx 3 hours duration

Leader: Brian Weeks-Joint Footpath Co-Coordinator

Description: Ever wondered where that goes.....or where that name came from? This walk has historical interest, stunning views over Modbury to Dartmoor and the distant coast and touches on some hidden parts of the town. The route is very varied covering tranquil Devon countryside at the southern end of Modbury Parish and explores areas that few visitors will discover.

A bacon roll, or full English breakfast will be available in the town beforehand at one of our historic hostelries. Pick up some scrummy nibbles & drinks, for along the way, from our traders. Finish off the day with a relaxing cup of tea, or the full works of scones and cream

Meet at: Palm Cross Green car park-opposite the school.PL21 0RB

Map ref: SX656516

Bring: Suitably stout footwear is recommended. Please bring packed lunch with sufficient drink.

Restrictions: Dogs are acceptable **provided they are under close control and may need to be put on a lead at certain points.**

Cost: Free

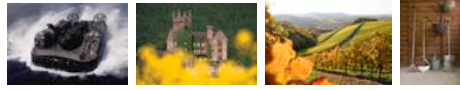
Travel Directions: From Modbury town centre, travel along the A379 towards Plymouth. Take the 1st right at the Palm Cross into Barrack Road. After 20 yards the car park is on the left opposite the school.

Public Transport: The regular First 93 bus stops in Modbury town centre. Please see www.traveline.org.uk for timetable details. It is then an approximate 500 yard walk up the hill .Turn right at the Palm Cross, the meeting point is on the right, opposite the school.

Parking: In Palm Cross Green car park, or in main Poundwell Car Park

Parking Fee: Free in Palm Cross Green car park, or from £0.90p per hour, in the town Poundwell car park.

Max no places: Maximum 25 participants



BLITZ AT THE BUNKER

As part of this special day commemorating the 70th anniversary of the Plymouth Blitz being held at the former Nuclear Bunker, local walks leader Martin Gooderson will be offering 2 opportunities to learn more about this fascinating site; the stunning area in which it sits; its significance during WW2 when RAF Bolt Head played such a vital role as the most southerly “safe landing” for returning pilots; and later, during the Cold War, when the Bunker was intended to provide a Regional Seat of Government.

Grid reference: SX718377

Walk 1

To be held during the morning, this will be a 6.5 miles medium grade walk with a recommended fitness level of FIT

This combines coast walking (with some cliff edges); the route will be steep in parts but on good clear paths and stretches on even country and quiet roads

Walk 2

To be held during the evening, this will be a 2 mile easy grade walk with a recommended fitness level of GENERAL

This will explore the airfield area in the twilight across flat and even terrain

Cost: **Walk 1 £2.50 per person**

Walk 2 £2.50 per person

Walks 1 & 2 £3.75 per person

Travel Directions: Take A381 to Malborough; turn right through village and at toll cottage, take left hand road. At junction, bear left again (right - signposted to Soar Mill Cove Hotel). At next junction, turn left – admission fees to event payable at this point : £10.00 per car (including all occupants / £1.00 per head for passengers on vintage buses (to be purchased before boarding)/

FREE to walkers!

Public Transport: The regular Tally Ho 606 Kingsbridge-Salcombe service bus stops at Malborough. Please see www.traveline.org.uk for timetable details. It is then an approximate 2.5 mile walk to the airfield/bunker site along the road which is not recommended; however there are safer footpath routes – see OS Maps 202 or OL 20

Alternatively why not take advantage of the special **FREE VINTAGE BUS** services which will be operating from Kingsbridge to the event site? Details of operating times and event tickets (to be purchased please before boarding - £1.00 per head) will be available from Kingsbridge Information Centre

Parking: There is **STRICTLY NO PARKING** permitted other than within the event site – please see above

Max no places: Maximum 25 participants for each walk



The commemoration event itself is being organized, and event charges will be collected, by Kingsbridge Lions

Club for the benefit of local charities and organizations and there is no obligation to take part in either of the walks so....

**If you ever wanted to see inside a “Cold War” Nuclear Bunker?
Or wondered why RAF Bolt Head played such a significant role
during the Plymouth Blitz?**

This is your chance.....!

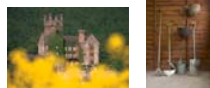
**With free vintage buses serving the event....wartime music....
displays, archive footage, films and memorabilia....
refreshments....tea dance....static plane....and a display of
MILITARY VEHICLES WITH MEMBERS OF THE
SOUTH WEST RE-ENACTMENT SOCIETY**

Event Admission Charges :
£1.00 per head for vintage bus passengers
£10.00 per car including occupants
FREE to walkers

NB : There is STRICTLY NO PARKING permitted other than within the event site

**For more information on the event or to purchase transport tickets please call in to,
or contact, Kingsbridge Information Centre – 01548 853195**

TOTNES GARDEN TRAIL



Description: An exploration of three new open spaces in Totnes centre, linked by Leechwell Lane. All on formerly underused sites, created by community groups and local trusts in partnership with South Hams District Council. Visit Heath's Garden, Leechwell Garden and the Lamb Garden in turn, wander through these interesting spaces and past their public art, hear about the history behind them and their new, innovative uses. View the immersion pool and see the principle of forest gardening and community food growing in action. Led by Sue Holmes, Totnes Development Trustee and lecturer.

A free copy of the Totnes Garden Trail will be given to all participants.

Each walk will take about 45 minutes.

Meet at: In front of St Mary's Parish Church, High Street, Totnes, TQ9 5NN at 11.00am

Map ref: SX803605

Terrain: Generally easy but with three road crossings, some upward slopes and a few steps along the way

Charge: **FREE (Donations to Totnes Development Trust please)**

CORNWORTHY'S GREEN LANES



Description: Come and trace the footsteps of those who once attended church regularly and made their way to and fro along green lanes, over fields and down the deep lanes with local author and "Green Lane" expert, Valerie Belsey – A Festival special to walk with such an eminent guide without charge!

Walk will take 4 hours. Very sorry no dogs, even on leads

Meet at: Cornworthy Church, TQ9 7HW (St. Peter Church) at 11.00am

Map ref: SX829555

Charge: **FREE**

THROUGH LANES AND FOOTPATHS FROM TOTNES TO BERRY POMEROY CASTLE AND BACK



Description: Enjoy a leisurely stroll with local author and historian Bob Mann, whose new book on the castle will be published in September. Walk through ancient lanes and woods to the famous haunted castle, and hear some of the stories associated with this mysterious landscape.

The walk will take 4-5 hours. There will be a stop at the castle for three quarters of an hour for those wishing to go in (separate entrance fee) and the castle cafe will be open.

Meet at: Totnes Information Centre TQ9 5DF at 12.00 noon

Map ref: SX 805606

Terrain: Distance roughly 5 to 6 miles, along sometimes quite rough terrain. The lanes can be muddy after rain

Charge: £9 per person Minimum 5 walkers

To ensure there are the minimum number of participants for this event to proceed we do ask that you please book your place/s in advance. Payment to be made to the walk leader on the day



EAST SOAR DISCOVERY TRAIL

Distance / terrain: 3 miles (plus) mostly footpaths, hilly and uneven terrain

Grade: strenuous in places

Timing: 2 hours starting at 11.00am

Leader Schalk Heselman - fully qualified youth leader

Description: Circular loop starting and finishing at East Soar Farm, Several Landmarks and signs to find on the way, Childrens' games after the walk.

Meet at: East Soar Farm, Malborough TQ7 3DR

Map ref: 721371

Bring: Waterproofs, walking shoes

Restrictions: Dogs allowed; children need to be 8 and over

Cost **Nil** - refreshments will be available at charge

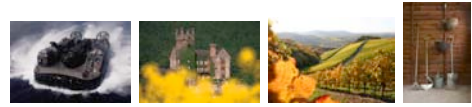
Travel Directions: Drive from Malborough to Soar Mill Cove. Go left where road forks (sign on the right for Soar Mill Cove Hotel). Drive to car park, through gate on left, follow track to farm.

Public Transport Buses available from Kingsbridge and Salcombe to Malborough

Parking: Yes

Parking Fee: No

Max no places: 50



SLAPTON – EXERCISE TIGER AND EVACUATION!

Slapton; the surrounding area; and its residents played a unique role in WW2 as part of the D-Day landings practice. Discover why Slapton was chosen and what it was like in the build up to this world changing event and some of the challenges faced. It's a short walk and talk with some great views and a chance to pick out some of the key points – and will include some archive photos and an opportunity to see a unique filmed account of those who lived through the evacuation of the area.

Distance: 2.5. miles

Grade: Easy paths includes some hills

Timing: 1.5 - 2.0 hours starting at 9.30am (including "evacuation" film)

Leader: Alan Denbigh - Slapton Line Partnership

Meet at: The Tank, Tank Carpark, Torcross (SX 82345 42286)

Restrictions: Dogs allowed (though will have to remain outside the cafe during the film); well-behaved children welcome though they may not find it as interesting as the older history buffs

Cost Nil - refreshments will be available at charge at The Lobster Pot (film venue)

Public Transport First 93 Buses available from Kingsbridge and Dartmouth to Torcross

Parking: Yes

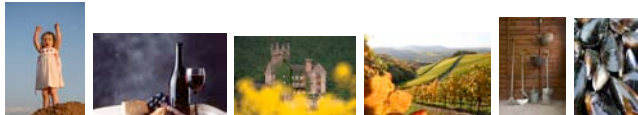
Parking Fee: Yes

Max no places: 18

***This is the ideal scene-setter for the special Event taking place on Sunday 25th at Slapton : Exercise Tiger Remembered!**

Date: Sunday 25th September 2011

HOW MUCH FUN CAN YOU HAVE IN YOUR TOWN CENTRE?



Whether you are 8 or 80 this day is intended to show you just how much fun you can have without even leaving Kingsbridgeit has been deliberately planned so that you can **dip in and dip out** of what you fancy; maybe some of your party will do one thing and others, something else. No matter what your interest, age or ability, we have tried to provide an activity for everyone – to enjoy individually or experience together!



DON'T FORGET: THIS IS ALSO NATIONAL WALK4LIFE DAY AND YOUR CHANCE TO TAKE PART IN KINGSBRIDGE'S OWN WALK4LIFE MILE!

Starting from Britton's Field (the town's traditional family picnic site, now rescued and reopened for use after many years overgrown and neglected) with its wonderful views overlooking the estuary and down to Salcombe, the Walk4Life Mile takes you back into the town centre, along the estuary, and incorporates the whole route of the **FREE** Family Walking and Wildlife Activity Trail.

Pick up your FREE WALK4LIFE T-shirt from Kingsbridge Information Centre anytime from 10.00am to 2.00pm on the day together with your Free Activity Trail – pop your T-shirt on - follow the Walk4Life Waymarked Mile – complete your Activity Trail - and bring it back into the Information Centre to collect your prizes, etc!

This is your chance to be part of a nationwide event right here in Kingsbridge!

And here's a selection of what else will be on offer for you to enjoy that day:-

Our wonderful archive of rural life – **COOKWORTHY MUSEUM** – will be opening from 11.00am to 4.00pm providing you with the perfect chance to explore all the fascinating exhibitions and displays depicting the diverse aspects of life in the South Hams, now and in the past; with dressing-up opportunities and childrens' activities galore, why not spend some family fun time together – and round it all off with a cream tea in the courtyard garden during the afternoon?

[Admission charges apply : £2.50 adults; £2.00 concessions; £1.00 children; £6.00 family - 2 adults and up to 4 children; cream teas available at charge]

And if you are sitting there wondering..."what's on the other side of that wall?" – well why not pop round and find out! There you will discover our widely acclaimed and award winning **Community Garden** with local "experts" on hand to share the delights of composting; advise on poorly plants; and share with you the history of the garden and its development into what you see today. This really is a must for anyone with green fingers and those who aspire to them – so come and enjoy an absolute haven of peace and quiet right in the heart of town! Open from 11.00am to 4.00pm, this is the perfect place for a picnic "at the top of town"....and don't forget to take home some fresh grown produce, too.

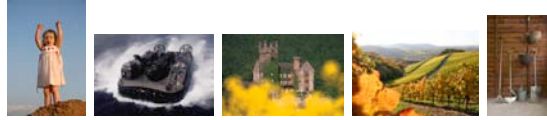
[Dogs with responsible owners are welcome in the Community Garden - if you wish to visit the Museum and have Fido with you, why not take it in turns to enjoy these adjacent local treasures?]

Whilst we have all things green on our minds, do you know why Kingsbridge won GOLD? Come and spend the morning exploring the town with members of the fantastic **Kingsbridge in Bloom** volunteer team on their **Heritage Walk**. Learn about how they used the town's history as inspiration for some of their floral displays; find out about the sustainable planting techniques they have employed and see how including drought resistant plants not only ensures all their hard work stays looking good for longer – but looks amazing too! This **FREE** stroll through some of the alleyways and backways is a not-to-be-missed opportunity for anyone looking for top tips for their own garden – or their own community : if you are thinking of becoming a Britain in Bloom entrant, come and pick the brains of this incredible bunch of locals who truly have turned Kingsbridge into a floral delight!

[Dogs on leads welcome on stroll; due to the topography of the town, there will be some steep sections and possibly some steps; anticipated time approx 1.5 hours; maximum numbers: 25]

For younger children, the activities are focused around the head of the estuary! If you haven't already taken part in the Walk4Life Mile, pick up the **FREE Family Walking and Wildlife Activity Trail** and complete the quizzes – with prizes for completed entries on the day, this is a great fun way to while away some time together. If you are itching to discover some of the fascinating creatures which lie beneath the surface of the water or in the rich estuary mud, Nigel Mortimer, our Estuaries Conservation Officer, will be on hand with underwater viewers; dipping nets; and friendly guidance to help you make the most of his **Watery Encounters!**

Looking for something more adventurous – then head off to The Crabshell Inn and try out Stand Up Paddle Boarding! With their Pizza Oven fired up from mid-day through to 7.30m (weather permitting), this is your chance to get instruction from the experts at KESUP who are offering pre-bookable Stand Up Paddle Boarding Lessons for just £10.00 per head (all equipment provided) at 3.00pm and 5.00pm. Numbers are limited so make sure you don't miss out and book now! There will be a freestyle SUP display by the KESUP guys at 4.30pm and then all the fun of the waterborne Jousting Competition – this has to be seen to be believed! You can enjoy live folk music from 6.00pm – what a great way to round off the day....



EXERCISE TIGER REMEMBERED!

If you go down to the Slapton Line today.....you will definitely be in for a big surprise!

Take a stroll at your own pace along the shingle ridge and find yourselves in a “time warp”... experience a WW2 “Exercise Tiger” encampment with military vehicles and uniformed Re-enactors ...walk through the encampment; talk to the characters; learn the story of Exercise Tiger; see the equipment, uniforms and memorabilia from the period, all lovingly and faithfully preserved or restored by their owners/exhibitors.

Located adjacent to the Memorial car park throughout the day (10.00am – 4.00pm approx) and against the stunning backdrop of Start Bay, this is your opportunity to be part of a “recreation” of a unique episode during those dark days of WW2....with some extra special excitement planned by our partners, the South West Re-enactment Society!

Distance: Slapton Line - approx 3 miles end to end

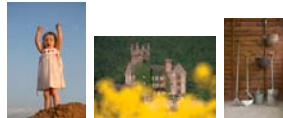
Restrictions: Dogs are allowed along Slapton Line although we would ask that they are kept on leads and well supervised within the Event site

Cost: **FREE** – donations are welcomed by members of the South West Re-enactment Society towards their expenses of attendance

Public Transport First 93 Buses available from Plymouth/Kingsbridge and Dartmouth to Torcross - full details of timetabling available from www.traveline.org.uk or Kingsbridge Information Centre

Parking: There are public car parks at both ends of the Slapton Line (Torcross Tank and Strete Gate; for those with limited mobility who wish to visit the Event we would recommend using the Memorial car park along the Line as this is adjacent to the Event site

Parking Fee: Yes



MODBURY TOWN SCRABBLE TRAIL

Distance / terrain: Less than 2 miles around the town pavements & lanes.

Grade: Easy, gentle walking suitable for all. Some steps, but these could be avoided by a short detour from route

Timing: Start anytime between 11.00am and 3.00pm, will take around 1½ hours to complete.

Leader: Self-guided,

Description: A fantastic way to spend a pleasant family Sunday. Stroll around the town following the clues, searching for those hidden bits of Modbury you never knew were there. Learn about the history of our ancestors, the variety of tradesmen, take in the architecture of our fine houses and most of all have fun! Look out for our Scrabble letters in the shop windows. Suitable for all ages, particularly children.

Return to Modbury Court for a traditional Devon Cream Tea afterwards, courtesy of the Modbury Society, for just £1.

Meet at: Collect leaflet from Modbury Tourist Information Office

Map ref:

Bring: Yourself! No special requirements.

Restrictions: None.

Cost: £3 per family, plus £1 per person for Cream Tea afterwards

Travel Directions: Modbury is situated on the A379 between Kingsbridge and Plymouth.

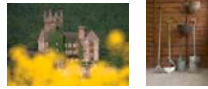
Public Transport: The regular First 93 bus stops in Modbury town centre. Please see www.traveline.org.uk for timetable details.

Parking: In main Poundwell Car Park. Limited free on street parking.

Parking Fee: From £0.90p per hour, in the town Poundwell car park.

Max no places: Not applicable

NO PREBOOKING REQUIRED – JUST TURN UP



TOTNES GARDEN TRAIL

Description: An exploration of three new open spaces in Totnes centre, linked by Leechwell Lane. All on formerly underused sites, created by community groups and local trusts in partnership with South Hams District Council. Visit Heath's Garden, Leechwell Garden and the Lamb Garden in turn, wander through these interesting spaces and past their public art, hear about the history behind them and their new, innovative uses. View the immersion pool and see the principle of forest gardening and community food growing in action. Led by Sue Holmes, Totnes Development Trustee and lecturer.

A free copy of the Totnes Garden Trail will be given to all participants.

Each walk will take about 45 minutes.

Meet at: In front of St Mary's Parish Church, Fore Street, Totnes, TQ9 5NN at 11.00am

Map ref: SX803605

Terrain: Generally easy but with three road crossings, some upward slopes and a few steps along the way

Charge: **FREE (Donations to Totnes Development Trust please)**



EAST SOAR DISCOVERY TRAIL

Distance / terrain: 3 miles (plus) mostly footpaths, hilly and uneven terrain

Grade: strenuous in places

Timing: 2 hours starting at 11.00am

Leader Schalk Heselman - fully qualified youth leader

Description: Circular loop starting and finishing at East Soar Farm, Several Landmarks and signs to find on the way, Children's games after the walk!

Meet at: East Soar Farm, Malborough TQ7 3DR

Map ref: 721371

Bring: Waterproofs, walking shoes

Restrictions: Dogs allowed; children need to be 8 and over

Cost **Nil** - refreshments will be available at charge

Travel Directions: Drive from Malborough to Soar Mill Cove. Go left where road forks (sign on the right for Soar Mill Cove Hotel). Drive to car park, through gate on left, follow track to farm.

Public Transport _Buses available from Kingsbridge and Salcombe to Malborough

Parking / Parking Fee: Yes / No

Max no places: 50



THE DARTMOOR TALES WALK

Description: This 'Dartmoor Tales Walk' will take in the sources of many moorland myths and legends. The route starts from Hound Tor car park (where there are the facilities of the refreshment van, the 'Hound of the Basket Meals' before and after), follows the trail over the tor into the medieval village behind and the valley below. Walkers will then follow tracks through fields and lanes to Manaton, where we take a look at the church and then head up the steepish slope to the Bowerman's Nose. From there we head to Jay's Grave (mysteriously decorated with fresh flowers) before making our way back to the car park.

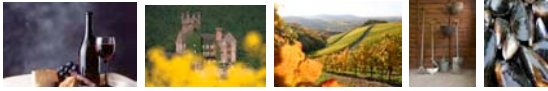
Walk will take about 3 hours and will be led by David Phillips, Founder Member of Torbay Paranormal Investigators (TIP).

Meet at: Hound Tor Car Park, TQ13 at 1.00pm

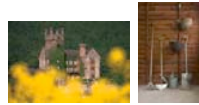
Map ref: SX 743790
Charge: Free Maximum 20 walkers

Date: Monday 26th September 2011

START THE DAY WITH BREAKFAST AND A BOAT TRIP!



The trip down the estuary from Kingsbridge to Salcombe is stunningly beautiful at any time but today is your chance to enjoy the peace and quiet of the early morning – and with hot, fresh bacon sandwiches to send you on your journey, what better way to start the last day of the Festival! Pop into The Crabshell Inn who will be providing real bacon “sarnies” from 7.45 am for up to an hour – so the choice is yours! Hop onto the 8.15 boat....which will deliver you down to Salcombe in plenty of time to take part in the [Walk Through Salcombe's Past](#) [for details see below] or stay and plan your day – perhaps take a later trip down, or use the bus to go and the boat to come back..... there is a wealth of walking opportunities to enjoy at both ends of the estuary but whatever you choose to do, and wherever you choose to do it -you will do it well fed! Alternatively, head off and explore the stunning coastline around Blackpool Sands and enjoy the very best local produce in this spectacular Bay [for details see below]



A WALK THROUGH SALCOMBE'S PAST

Distance/terrain: Approx. 2½ miles, Salcombe town streets and paths

Grade: Easy, but with some uphill walking.

Timing: 2pm -3.30pm but with optional visit to Salcombe Maritime Museum at end (3.30pm – 4.15pm)

Leader: Roger Barrett, Salcombe Maritime Museum

Description of walk: Town Trail walk exploring Salcombe's history

Meet at: Outside Salcombe Information Centre, Market Street

Map ref: SX785430

Bring: no special requirements

Restrictions: Dogs on leads acceptable (but not for optional museum visit). Not really suitable for children under 8.

Cost: **Walk is free of charge.** Small entrance fee for optional museum visit

Travel Directions: Salcombe Information Centre is near the centre of town.

Public Transport: Regular buses from Kingsbridge to Salcombe – contact Salcombe Information Centre for more information

Parking: Creek or Shadycombe Car Parks

Parking fee: In the Creek Car Park – long stay: £1.30 for 1 hour, £2.60 for 2 hours, £3.90 for 3 hours and £6.50 for all day; In Shadycombe Road Car Park – short stay - £1.00 for 1 hour, £2.00 for 2 hours, £3.00 for 3 hours



TOTNES GARDEN TRAIL

Description: An exploration of three new open spaces in Totnes centre, linked by Leechwell Lane. All on formerly underused sites, created by community groups and local trusts in partnership with South Hams District Council. Visit Heath's Garden, Leechwell Garden and the Lamb Garden in turn, wander through these interesting spaces and past their public art, hear about the history behind them and their new, innovative uses. View the immersion pool and see the principle of

forest gardening and community food growing in action. Led by Sue Holmes, Totnes Development Trustee and lecturer.

A free copy of the Totnes Garden Trail will be given to all participants.

Each walk will take about 45 minutes.

Meet at: In front of St Mary's Parish Church, High Street, Totnes, TQ9 5NN at 11.00am

Map ref: SX803605

Terrain: Generally easy but with three road crossings, some upward slopes and a few steps along the way

Charge: **FREE (Donations to Totnes Development Trust please)**



SO WHAT IS THE DEVON RURAL ARCHIVE – WHAT DOES IT DO?

Distance / terrain: 6 miles circular walk on footpaths, lanes and permissive paths. Possibly muddy in places.

Grade: Moderate/Strenuous includes some hills & stiles.

Timing: 11.45am start, approx 4 hours duration

Leader: Frank Mullery-South Hams Ramblers leader

Description: So what is the Devon Rural Archive and what does it do? Well now is your chance to find out! Browse the library and exhibition room, followed by a guided tour of the archaeological and historic features of the garden. Returning along Miss Husbands Path, across the site of the Civil War (1642) Battle of Modbury, with a brief talk.

Meet at: The Recreation Ground, off Barrack Road, Modbury.

Map ref: SX 657524

Bring: Suitably stout footwear is recommended. Please bring packed lunch. Please also carry sufficient drink.

Restrictions: Regrettably dogs are not permitted on this particular walk.

Cost: £5

Travel Directions: From Modbury town centre, travel along the A379 towards Plymouth. Take the 1st right at the Palm Cross, straight across into Barrack Road, with the school on your right.

Passing Champenowne on your right, follow alongside the stone wall, bearing left at right hand bend. After 50 yards turn right into the Recreation Ground.

Public Transport: The regular First 93 bus stops in Modbury town centre. Please see www.traveline.org.uk for timetable details. It is then an approximate 500 yard walk up the hill to Palm Cross, and then follow details given above.

Parking: Plenty of free parking in the Recreation Ground car park.

Parking Fee: Free

Max no places: Maximum 12 participants



FOOD LOVER'S DELIGHT!

Think of Start Bay Crab....organic Devon steak....now imagine enjoying that served “on the beach” at the iconic Blackpool Sands Venus Café, either as a well earned reward after a morning's walk along the stunning Start Bay coastline or to set you on your way for an afternoon stroll around this beautiful area. With a stunning walk on offer in either direction, the choice is yours but undoubtedly the highlight of the day will be your Venus Tasting Lunch! Sample local food and drink delights after learning from Michael Smith about the Venus ethos and the passion behind the Love The Flavour quality mark.

Pick up your FREE walk Guide for the area from Venus at Blackpool Sands or either Dartmouth or Kingsbridge Information Centres and explore at your own pace – but do make sure you reach Venus by 12.30pm! Let Michael explain the delights to come and then

savour the very best of local food and drink with a Festival special Venus Sample Menu at just £10.00 per head.

Numbers are limited to 30 for this wonderful opportunity so **PREBOOKING IS ESSENTIAL PLEASE**



LAST ORDERS

Description: How better to bring the Festival to an end than with another opportunity to enjoy the company and expertise of Valerie Belsey? Take an evening walk out from Totnes to Harberton for a drink at the end of the Festival. Walk into the dimpley light and explore what were once old ways towards Plymouth.

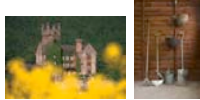
Walk will take about 4 hours. Not suitable for dogs, even on leads. Primarily aimed at adults as there will be a pub stop and the walk will not end until about 9pm.

Meet at: The foot of Harper's Hill, Totnes, off Western By-Pass. TQ9 5GG 5.00PM

Map ref: SX798603

Charge: *FREE*

Fringe Event: Tuesday 27th September



TOTNES GHOST WALK

Bob Mann will be offering his usual Totnes Ghost Walk commencing at 8.00pm from outside Totnes Information Centre, TQ9 5DF.

Cost: £5 per person, £3 concession, children under 12 free Payable to Walk Leader on the day

We do hope you find something of interest in the above Itinerary and we look forward to welcoming you to our 2011 South Devon Walking and Activities Festival! In the meantime here's all the information you need to know to take part...

FESTIVAL BOOKING INFO:

FESTIVAL WEBSITE: www.kingsbridgeinfo.co.uk/festival

FOLLOW US ON TWITTER: @EnjoySouthDevon

FIND US ON FACEBOOK: EnjoySouthDevon

DARTMOUTH & KINGSBRIDGE

For more information – or to make sure of your places - on “GREEN” events please contact Kingsbridge Information Centre on 01548 853195 or email advice@kingsbridgeinfo.co.uk

For specific enquiries relating to Dartmouth, including accommodation in Dartmouth, please contact the Team at Dartmouth Information Centre direct on 01803 834224 or email:

admin@discoverdartmouth.com

MODBURY

If the “RED” events have whetted your appetite, contact Modbury Information Centre on 01548 830159 or email enquiries@modburytic.org.uk to book your places

SALCOMBE

Like the look of these? Then contact Salcombe Information Centre for more information, or to book on, "ORANGE" events - 01548 843927 or email info@salcombeinformation.co.uk

TOTNES

To ensure you don't miss out on these special "BROWN" events, just get in touch with Totnes Information Centre on 01803 863168 or email: enquire@totnesinformation.co.uk

CANCELLATIONS:

When booking, full contact details will be requested and every effort will be made to notify you in the event that it should prove necessary to cancel any Festival event or activity. However please note that the organisers cannot accept liability whatsoever for inconvenience or any claim in respect of associated costs incurred in connection with your planned participation in the event or activity in cases of cancellation.

DISCLAIMER:

All information is provided by the organisers in good faith and is correct to the best of our knowledge; however we can accept no liability for inaccuracies or omissions or for any loss or damage in any way connected or arising out of publication of this Itinerary in whatever format.

The 2011 SOUTH DEVON ACTIVITIES AND WALKING FESTIVAL ORGANISERS are the Association of South Hams (Tourist) Information Centres c/o Kingsbridge Information Centre, The Quay, Kingsbridge, South Devon TQ7 1HS